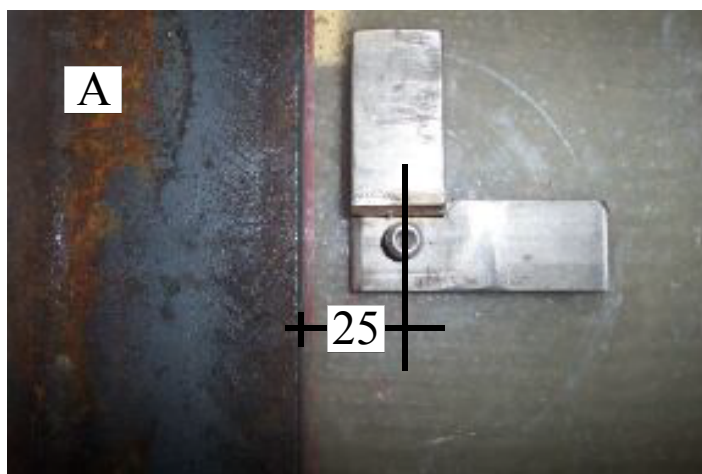


Floor plate clip fixing instructions



- 1/ Drill an 11 mm hole 25 mm from edge of steel frame (ref pic A).
- 2/ Countersink the top face ensuring bolt head sits flat (ref pic C & D).
- 3/ Resin seal hole with V/E resin and allow to cure.
- 4/ Place clip as in picture A.
 Use 1 spring washer and flat washers to suit steel thickness.
 Trial clips on each thickness to test how many flat washers are required.
 Then nip up bolt, do not over tighten.
- 5/ Place sheet into position.
 Loosen bolt slightly and rotate allen key tool clockwise to tighten clip (as in pic B).
 Some practice may be needed to perfect this.

